







## DEFINE EARTHING

In Electrical Engineering, earth or ground is the reference point in an electrical circuit from which voltages are measured, a common return path for electric current or a direct physical connection to the earth. In an electrical installation, an earthing system or grounding system connects specific parts of that installation with the Earth's conductive surface for safety and functional purposes.

## BENEFIT OF EARTHING

Electrical circuits may be connected to ground (earth) for several reasons. Earthing serves as.

- Personal protection
- Property/ operational protection
- Potential grading earthing
- Electro-magnetic pulses protection
- Lightning protection



## PRODUCT CODE SL-GI -01

### GI EARTHING ELECTRODE (PIPE IN STRIP)

MODEL	LENGTH MTR	INNER STRIP	OUTER PIPE DIAMETER (MM)	TERMINAL SIZE
SL-G 60	3	25X3	50	40X6
SL-G 51	3	25X3	80	50X6

- Good electrical conduction.
- Based on globally accepted technology.
- Stable performance due to uniformed coating.
- Very Cost effective.
- Long life and easy installation.
- Various models according to customer requirements.
- Suitable for all types of soil.
- Superior resistance to oxidation.
- High tensile strength.
- Effective performance.



## PRODUCT CODE SL-CT-02

### COPPER TERMINAL EARTHING ELECTRODE

MODEL	LENGTH MTR	INNER STRIP	OUTER PIPE DIAMETER (MM)	TERMINAL SIZE
SL-G 60	3	25X3	50	40X6
SL-G 51	3	25X3	80	50X6

- Good electrical conduction.
- Based on globally accepted technology.
- Stable performance due to uniformed coating.
- Very Cost effective.
- Long life and easy installation.
- Various models according to customer requirements.
- Suitable for all types of soil.
- Superior resistance to oxidation.
- High tensile strength.
- Effective performance.

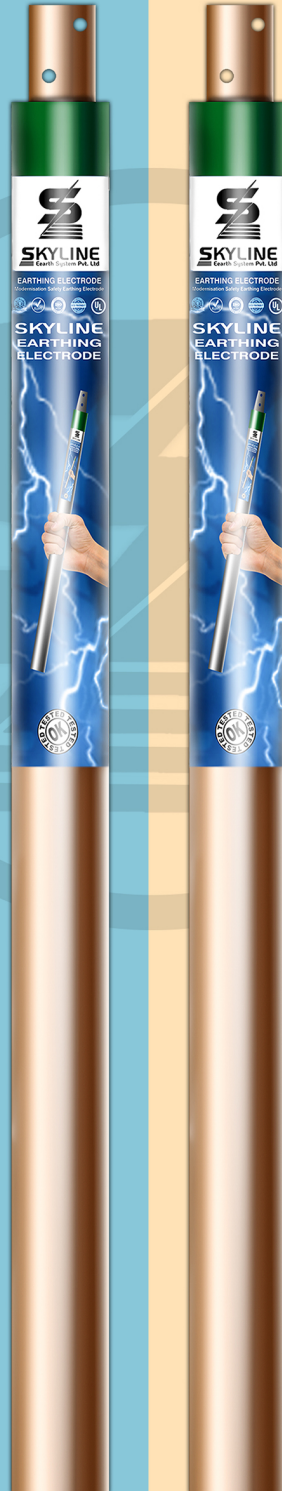


## PRODUCT CODE SL-PC-03

### PURE COPPER EARTHING ELECTRODE

MODEL	LENGTH MTR	INNER STRIP	OUTER PIPE DIAMETER (MM)	TERMINAL SIZE
SL-G 60	3	25X3	50	40X6
SL-G 51	3	25X3	80	50X6

- Good electrical conduction.
- Based on globally accepted technology.
- Stable performance due to uniformed coating.
- Very Cost effective.
- Long life and easy installation.
- Various models according to customer requirements.
- Suitable for all types of soil.
- Superior resistance to oxidation.
- High tensile strength.
- Effective performance.



## PRODUCT CODE SL-CB-04

### COPPER BONDED EARTHING ELECTRODE

MODEL	LENGTH MTR	INNER STRIP	OUTER PIPE DIAMETER (MM)	TERMINAL SIZE
SL-G 60	3	25X3	50	40X6
SL-G 51	3	25X3	80	50X6

- Good electrical conduction.
- Based on globally accepted technology.
- Stable performance due to uniformed coating.
- Very Cost effective.
- Long life and easy installation.
- Various models according to customer requirements.
- Suitable for all types of soil.
- Superior resistance to oxidation.
- High tensile strength.
- Effective performance.



## PRODUCT CODE SL-CBR-05

### 4G COPPER BONDED ROD

MODEL	LENGTH MTR	TERMINAL SIZE	COPPER MICRON
SL-G 17.2	3	50X6	80 to 100
SL-G 19	3	50X6	80 to 100

- Good electrical conduction.
- Based on globally accepted technology.
- Stable performance due to uniformed coating.
- Very Cost effective.
- Long life and easy installation.
- Various models according to customer requirements.
- Suitable for all types of soil.
- Superior resistance to oxidation.
- High tensile strength.
- Effective performance.



## PRODUCT CODE SL-CBR-06

### COPPER BONDED ROD

MODEL	LENGTH MTR	TERMINAL SIZE	COPPER MICRON
SL-G 17.2	3	50X6	80 to 100
SL-G 19	3	50X6	80 to 100

- Good electrical conduction.
- Based on globally accepted technology.
- Stable performance due to uniformed coating.
- Very Cost effective.
- Long life and easy installation.
- Various models according to customer requirements.
- Suitable for all types of soil.
- Superior resistance to oxidation.
- High tensile strength.
- Effective performance.





**PRODUCT CODE SL-EPC-07**

**EARTH PIT COVER**

### SPECIFICATION

<b>AT TOP :</b>	10 Inches (254mm)
<b>AT BOTTOM :</b>	13 Inches (330mm)
<b>AT HEIGHT :</b>	10.25 Inches (260mm)

#### Features-

- Made of polypropylene.
- Environment Friendly rust Proof.
- Factory built four openings for earth conductor / strips etc.
- Removable top for Pit inspection.



**PRODUCT CODE SL-BFC-08**

**BACKFILL COMPOUND**

**AVAILABLE IN 25KG & 15KG PER BAG**

#### Features-

- Lowest resistance.
- Compatible with CU, GI, copper bonded etc.
- NO Hazardous material.
- Never need Recharging.
- Having corrosion inhibitor.
- Compatible with all type of Sands.



# METHOD OF INSTALLATION EARTHING ELECTRODE



**Step 1.** Make a hole with auger in ground.

**Step 2.** Take hole measurement : 4" diameter & 10 feet depth.

**Step 3.** Take SKYLINE earth electrode and insert in hole.

**Step 4.** Electrode is inserted in hole. And fill the hole with GROUND EARTH ENHANCING COMPOUND.

**Step 5.** Take a bucket of water around the rod according to rod needed.

**Step 6.** Place the SKYLINE earth pit cover on earthing electrode.

**Step 7.** Cover the skyline electrode with SKYLINE earth pit cover around the soil & set properly.

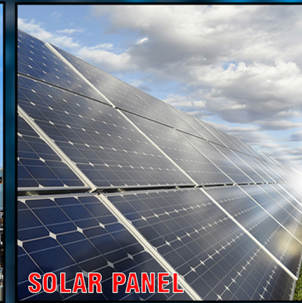


EARTHING | GROUNDING | BONDING

## Our Certification



## Application of Earthing



## OUR PRODUCTS

GI EARTHING ELECTRODES | COPPER EARTHING ELECTRODES  
COPPER BONDED EARTHING ELECTRODES | COPPER BONDED EARTH RODS  
ESE ADVANCED LIGHTNING ARRESTORS | CONVENTIONAL LIGHTNING ARRESTORS  
SURGE PROTECTION DEVICE | GROUND EARTH ENHANCING COMPOUND  
EXOTHERMIC WELDING & EARTH PIT COVER